

# Blixer® 2 / 3 / 4 / 4 V.V.

## Safety and Operating Instructions

Hang on the wall.



robot coupe®  
www.robot-coupe.com

### Control Panel



Power Off Button



Power On Button



Pulse button

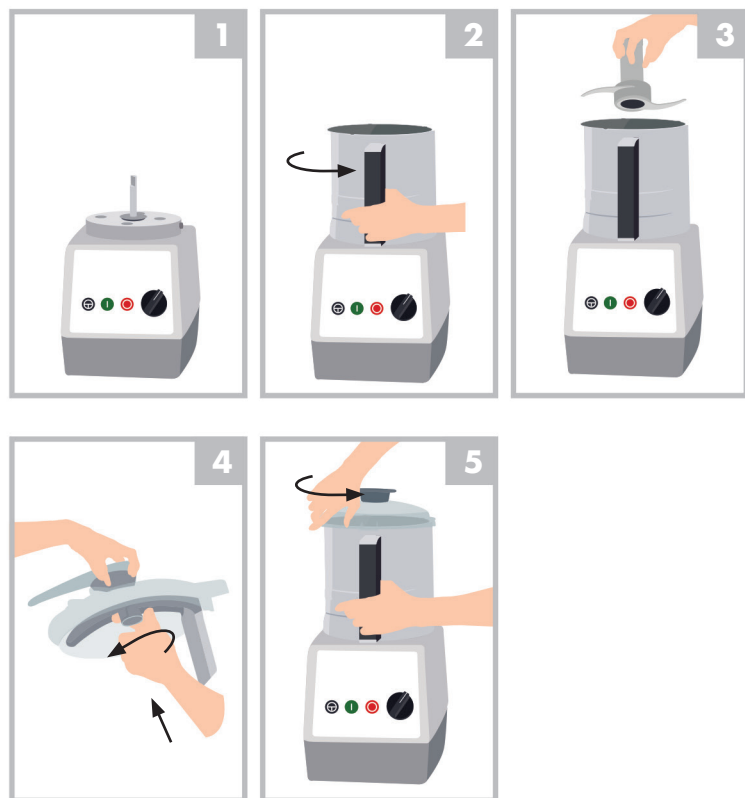


2-speed Selector switch



Speed variator

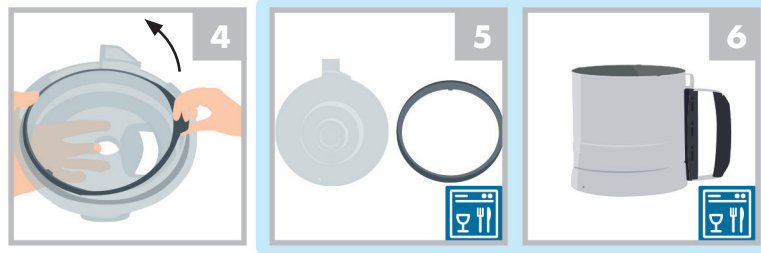
### Switching on and using the mixer



### Cleaning and maintenance

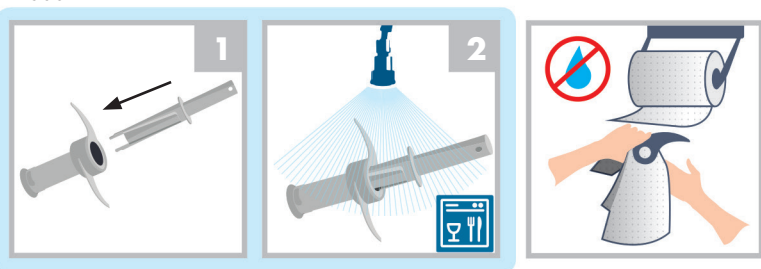


#### Bowl

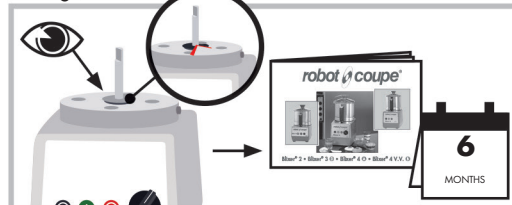


#### BLIXER 3 / 4

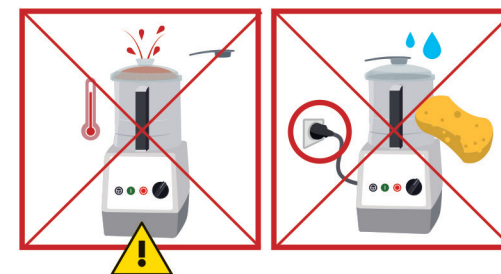
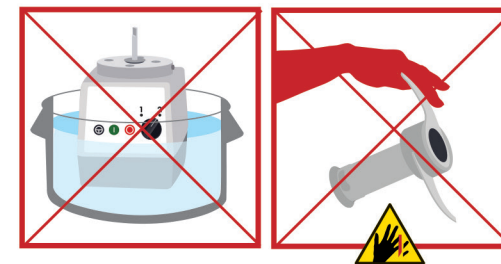
#### Blade



#### O-ring (seal)



### Safety



Never try to remove the locking and safety systems.